

*Phantom Limb*  
Lynn Hershman

# Electronic and Mechanical Forms



electrical (ɪˈlɛktrɪk(ə)l)

1. adjective: concerned with, operating by, or producing electricity."electrical appliances"
2. plural noun: electricals; noun: electrical electrical equipment or circuitry.

Mechanical (mɪˈkænɪk(ə)l)

1. adjective: mechanical: operated by a machine or machinery. "a mechanical device". Relating to machines or machinery.
2. noun: mechanical; plural noun: mechanicals The working parts of a vehicle.

# Lynn Hershman

## Lynn Hershman: Phantom Limb

The Phantom Limb Photographs are a series of black-and-white photographs, where Hershman combines female bodies with different technical features like cameras or camera lenses. These works merge human bodies with technological cyborgian attributes, pointing out our reliance on technology.



◀◀ Fight Art Censorship. Phantom Limb Series. 1986. ▶▶



Images consider electronics and media and how they invade our lives.

Hershman's substitutions of robotic appendages for female anatomical features also allude to the dehumanisation brought on by technology.

The distinction between the animate and inanimate is uncannily effaced in these photomontages.



◀◀ Her Showness. Phantom Limb Series. 1986. ▶▶



◀◀ Biological Clock. Phantom Limb Series. 1986. (14 / 21) ▶▶



◀◀ DOWN! Plugged. Phantom Limb Series. 1986. ▶▶



◀◀ Monocular Vision. Phantom Limb Series. 1986. ▶▶

# Lynn Hershman: Analysis

In this photograph a woman with a camera replacing her head kneels in the centre of the image and holds out her hand as if she is reaching out to the viewer

The way the figure is kneeling makes us think she could be praying or covering and the hand held out for help. Typically of Hershman's women the camera does not allow her to speak or shout out to us

The masculine element of the TV contrasts with the female figure and the use of the TV to replace the head may be a comment on the mindless way we let TV invade our lives

In this photograph a pair of woman's legs wearing a lacy mini skirt are holding up a television set on the screen we see a close up of a woman's eyes.



Typical of Hershman's the figure is central to the composition and takes up the whole height of the image. the black and white figure stands out on the bright white background

The figure is central to the composition and takes up the whole height of the image. the black and white figure stands out on the bright white background

While the camera obscures the woman's face and features in the viewfinder we can see another woman in a typical modelling pose, these images seem to allude to the idea that women are to be viewed but not heard

In a black and white image Hershman makes use of contrast to take out the detail from the background and create a strong central figure

The woman has no arms or mouth which would make her powerless and without a voice. although we are about to look at her.

both of the female elements of the image are feminised the legs in high heels and a mini skirt and the eyes looking up and directly at the viewer

# Electronic and Mechanical Forms: Contact Sheet



SAM\_1140.JPG



SAM\_1141.JPG



SAM\_1142.JPG



SAM\_1143.JPG



SAM\_1144.JPG



SAM\_1145.JPG



SAM\_1146.JPG



SAM\_1147.JPG



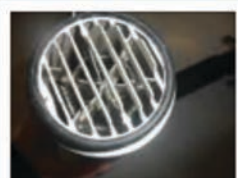
SAM\_1148.JPG



SAM\_1149.JPG



SAM\_1150.JPG



SAM\_1151.JPG



SAM\_1152.JPG



SAM\_1153.JPG



SAM\_1154.JPG

# Electronic and Mechanical Forms: Contact Sheet



SAM\_0236.JPG



SAM\_0237.JPG



SAM\_0238.JPG



SAM\_0239.JPG



SAM\_0240.JPG



SAM\_0241.JPG



SAM\_0242.JPG



SAM\_0243.JPG



SAM\_0245.JPG



SAM\_0246.JPG

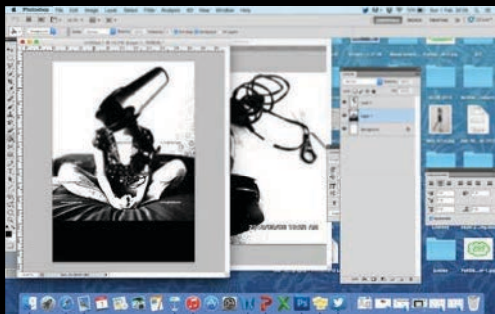


SAM\_0248.JPG

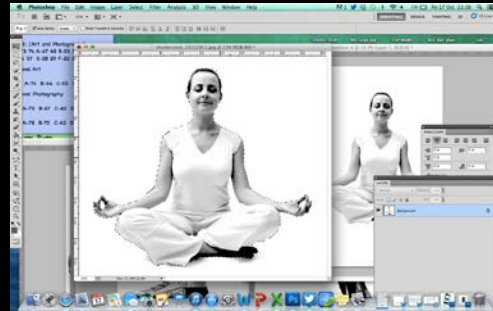


SAM\_0249.JPG

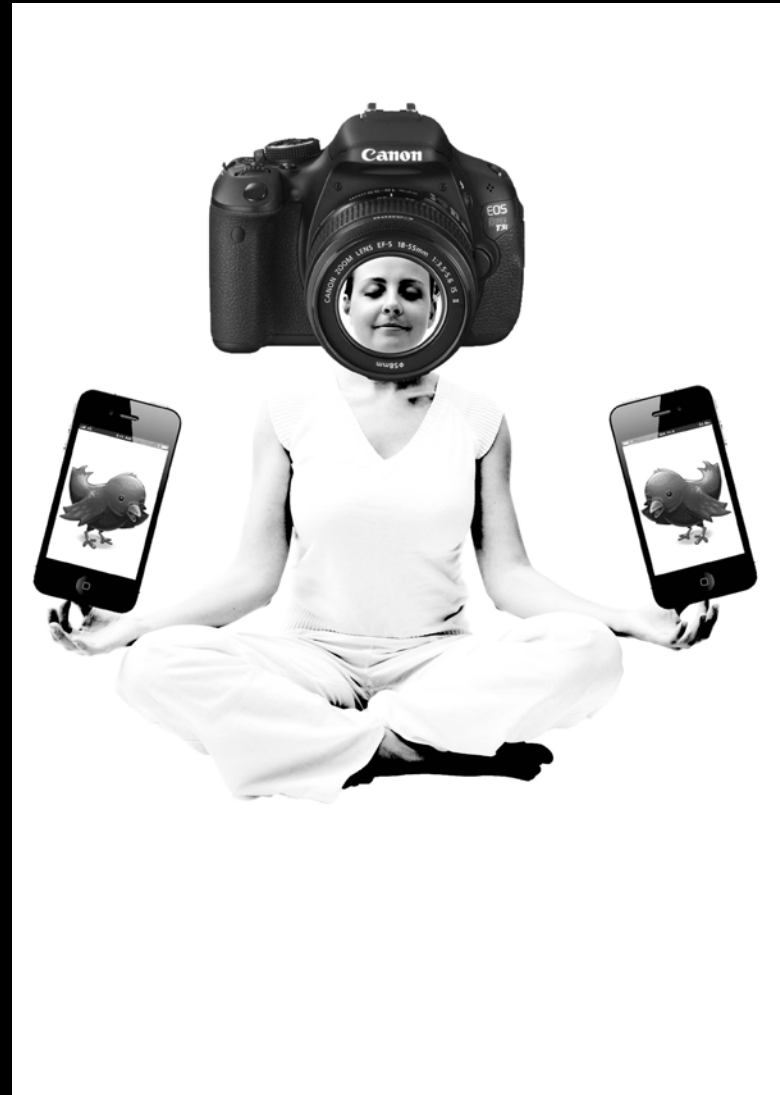
# My Recreations



# My Recreations

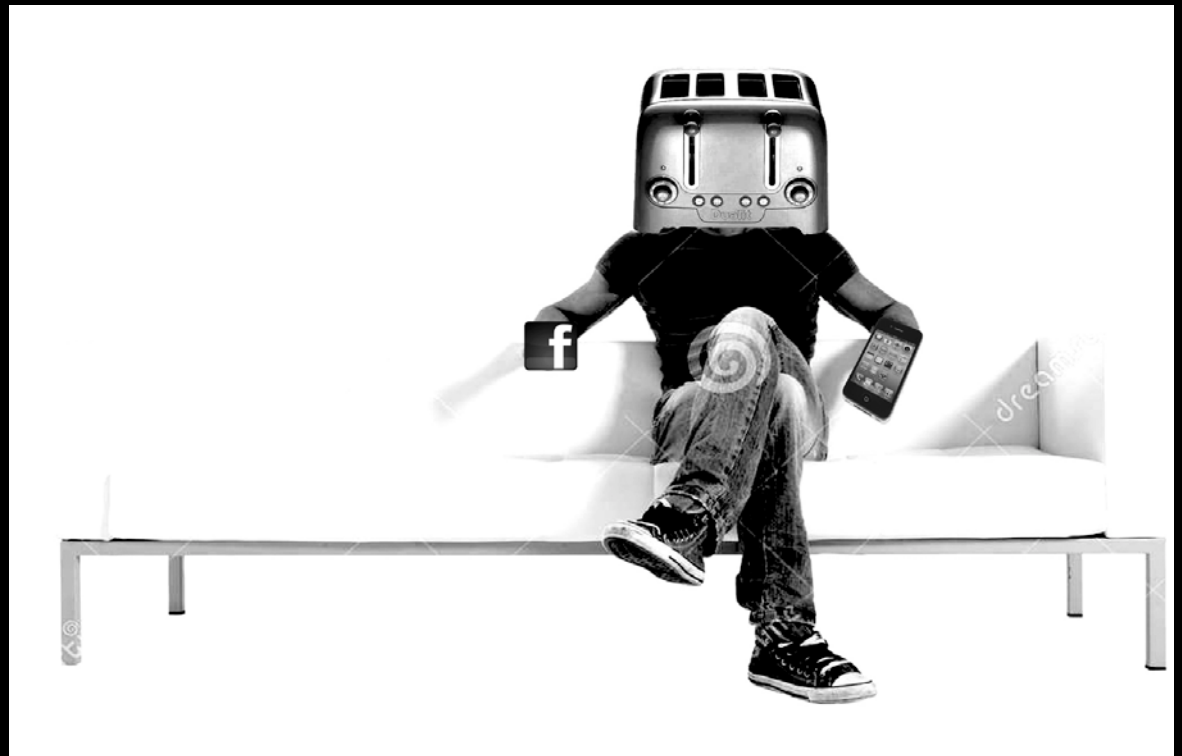
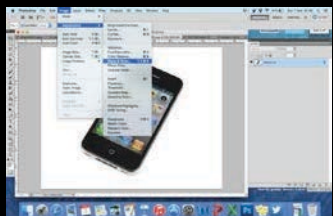
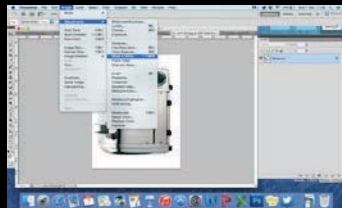
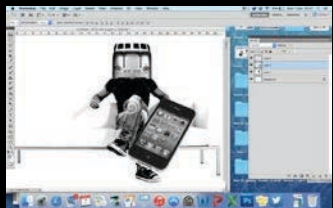
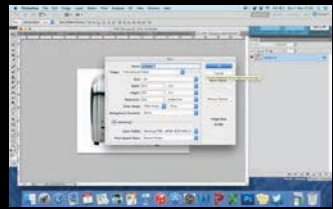


Cameraheadman, Phantom LTD Series, 1995.





# My Ideas: Idea One



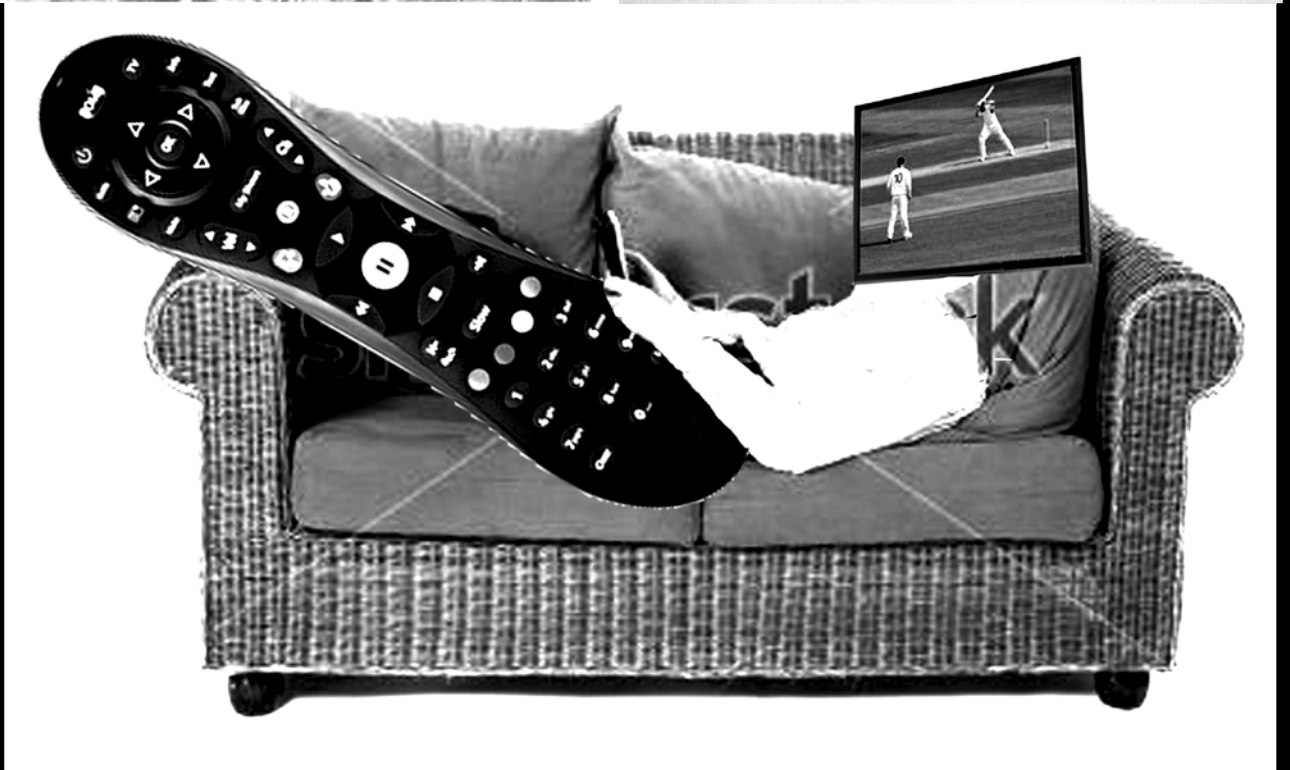
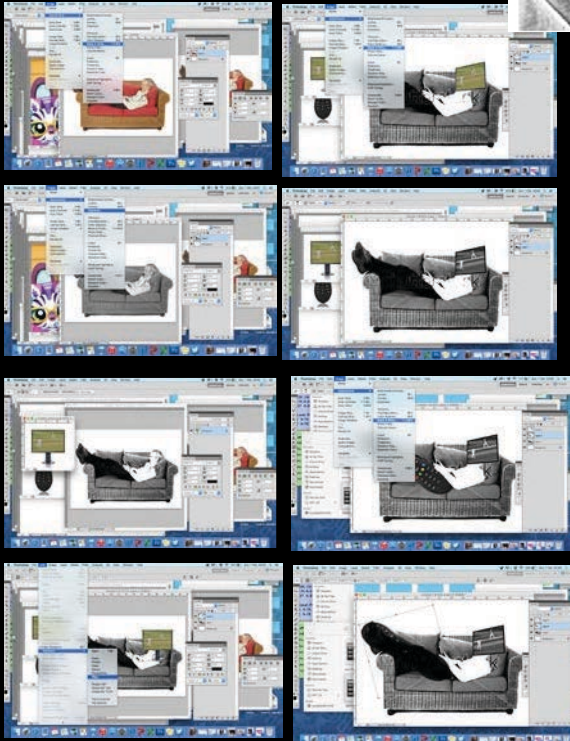
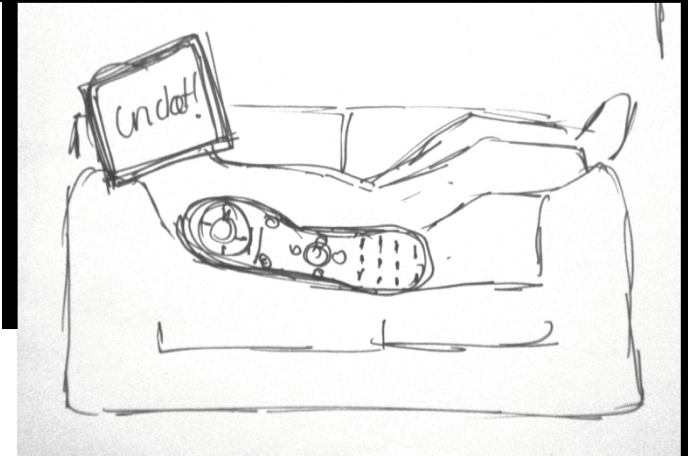
# My Ideas: Idea Two



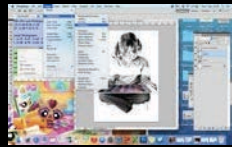
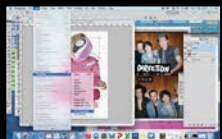
The Ashes TEST MATCH SPECIAL **INC 147** **Overs 34**

ENGLAND	1st INNINGS	2nd INNINGS	
Andrew Flintoff	88	Steve Clark	100
Ian Bell	71	Glenn McGrath	9.07
AUSTRALIA			
Steve Waugh	71	James Anderson	7.00
Glenn McGrath	80	Glenn McGrath	8.00
IRELAND			
Paul Stirling	117	Glenn McGrath	2.00
Kevin O'Brien	80	Glenn McGrath	2.00

APPROXIMATELY 10.00 AM GMT ON 10/08/05



# My Ideas: Idea Three





IMG\_5256.jpg



IMG\_5257.JPG



IMG\_5258.jpg



IMG\_5259.jpg



IMG\_5260.jpg



IMG\_5261.jpg



IMG\_5262.jpg



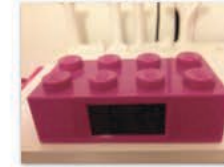
IMG\_5263.jpg



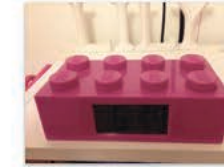
IMG\_5264.jpg



IMG\_5265.jpg



IMG\_5266.jpg



IMG\_5267.jpg



IMG\_5268.JPG



IMG\_5270.JPG



IMG\_5271.JPG



IMG\_5272.JPG



IMG\_5273.JPG



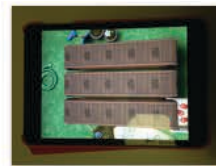
IMG\_5274.jpg



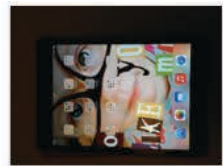
IMG\_5275.jpg



IMG\_5276.jpg



IMG\_5277.JPG



IMG\_5278.JPG



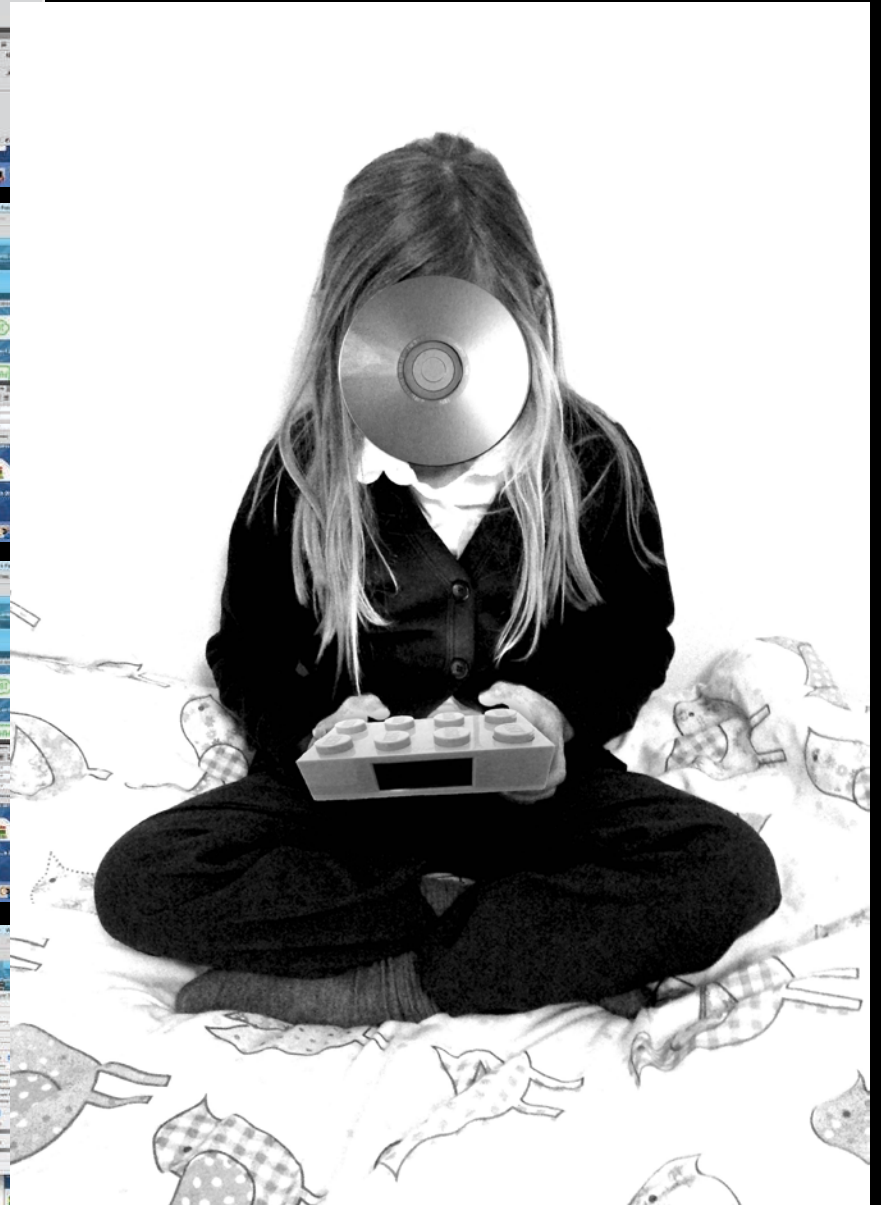
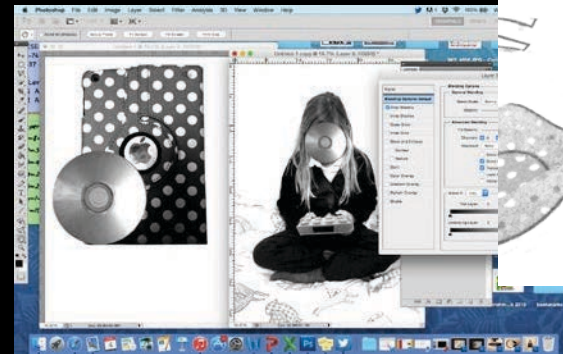
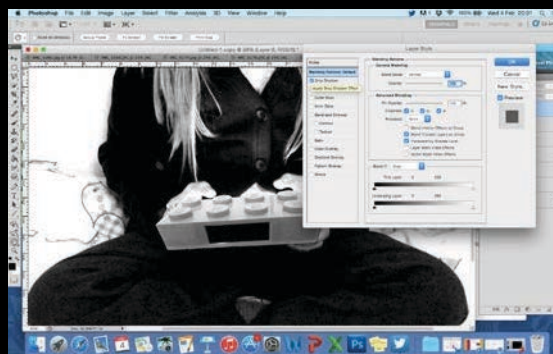
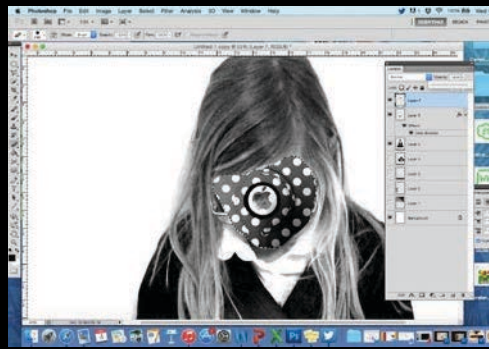
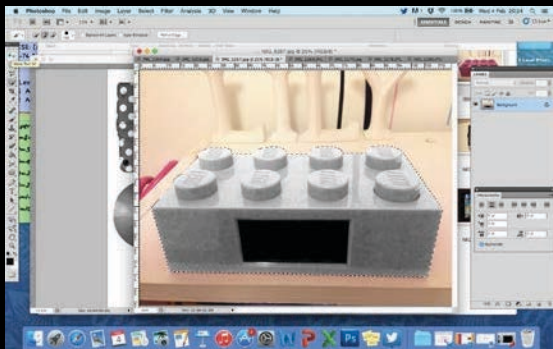
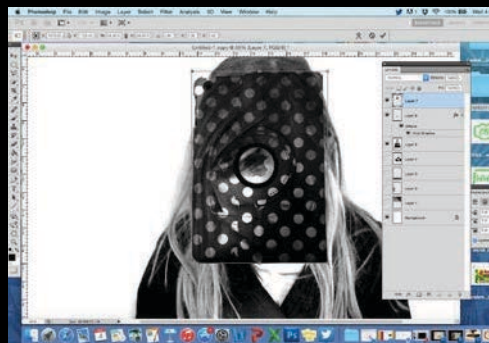
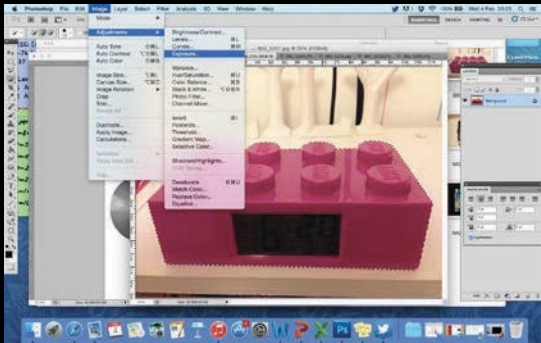
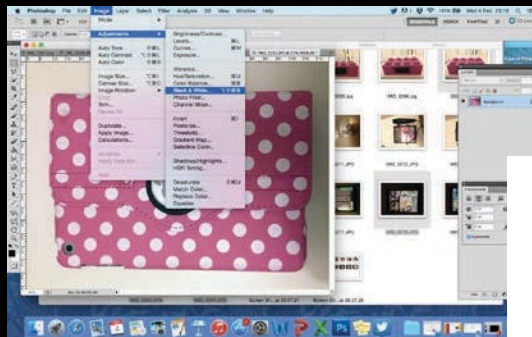
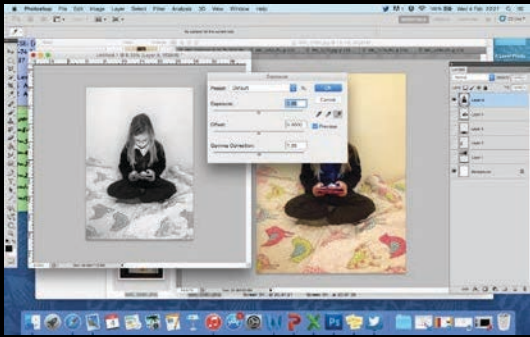
IMG\_5279.JPG

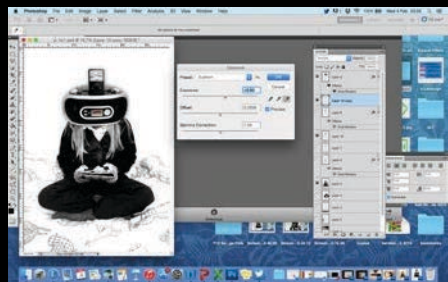
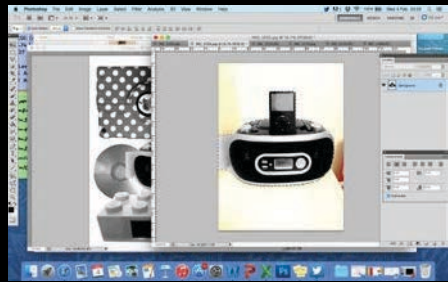
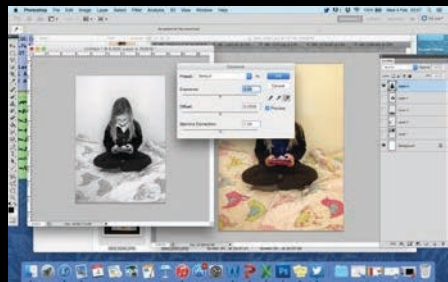


IMG\_5280.JPG



IMG\_5281.JPG







# Hannah Hoch

Proportion

Found images

Collage

Features

Clothing

Colour

Montage

Figures

Distorted

Humour

